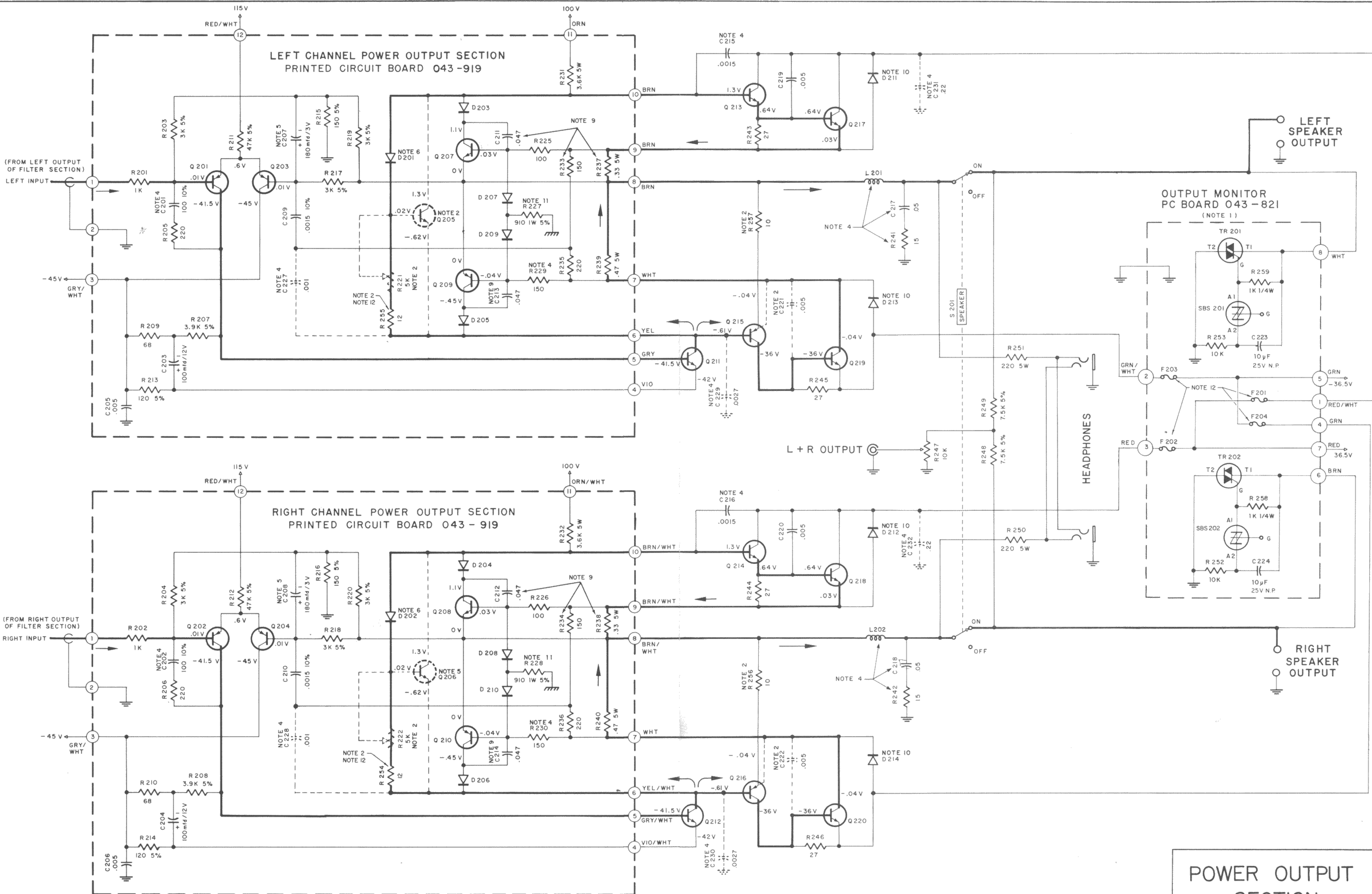
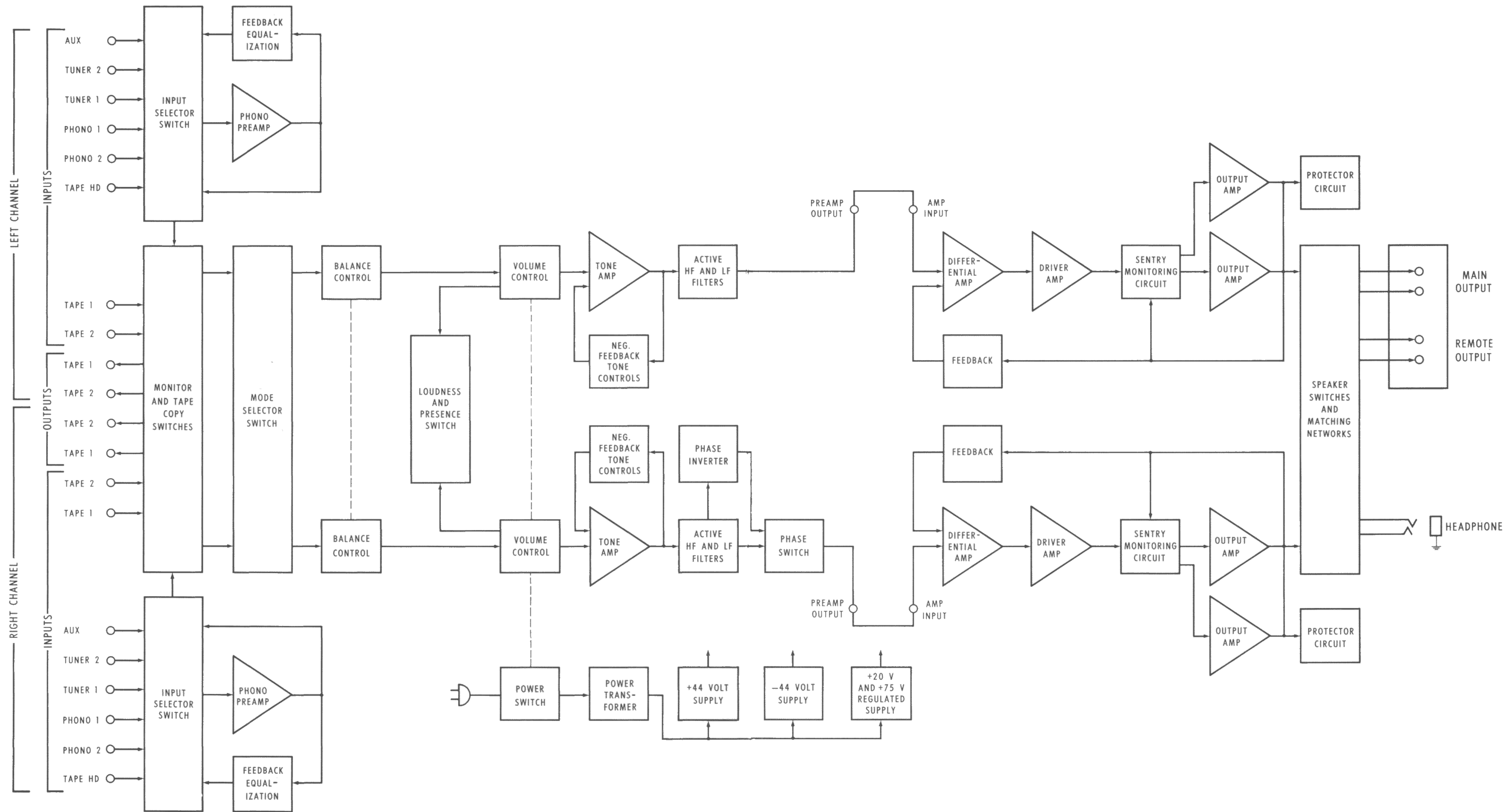


PREAMP. SECTION



HEAVY LINE SHOWS PRIMARY SIGNAL PATH

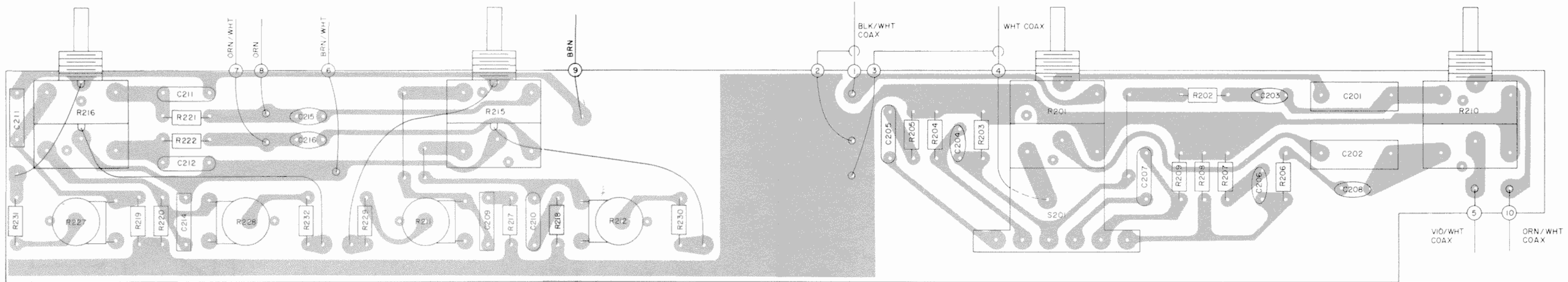
POWER OUTPUT SECTION



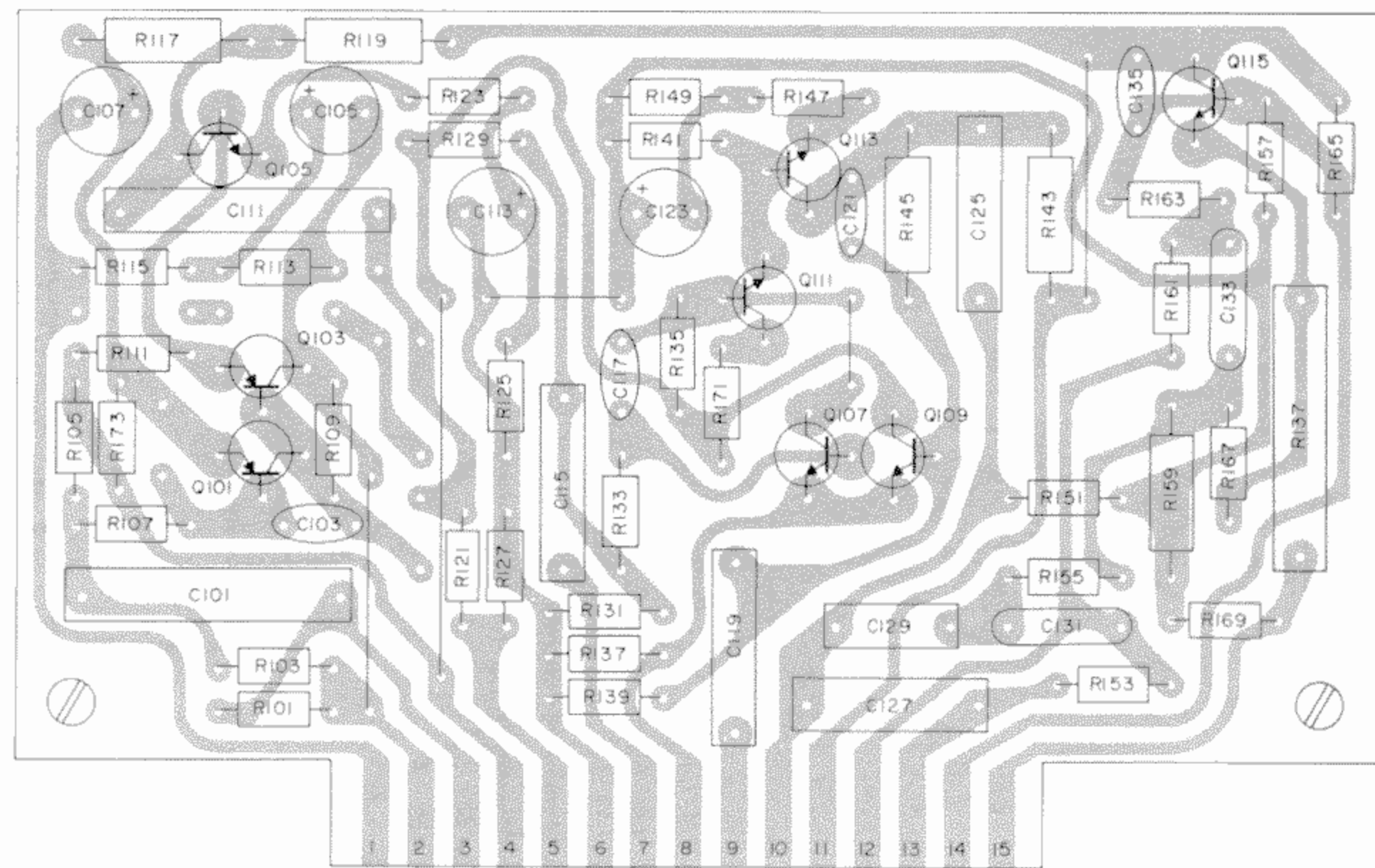
MA6100 BLOCK DIAGRAM

TONE & VOLUME CONTROL PC BOARD 044-514

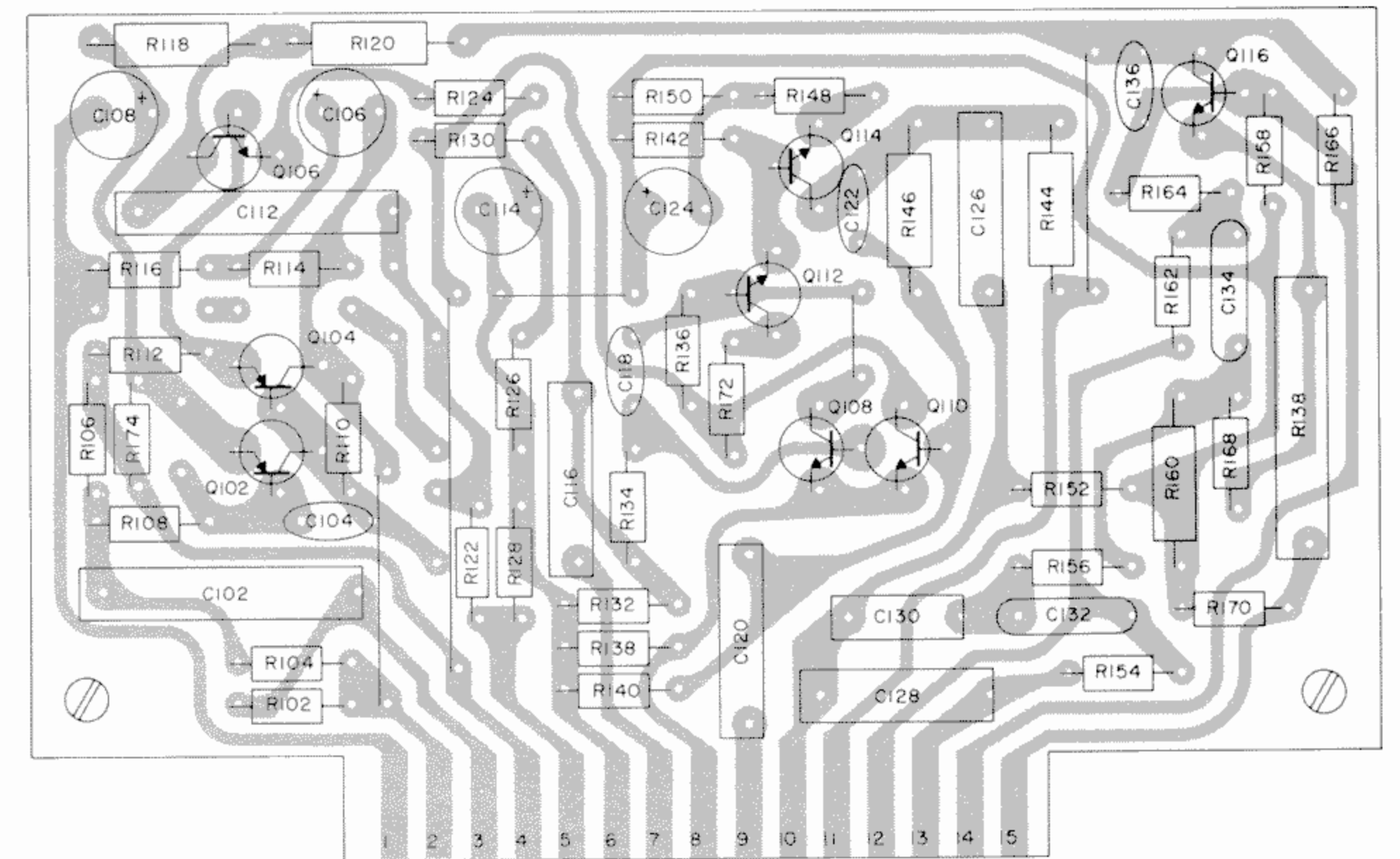
NOTE 10



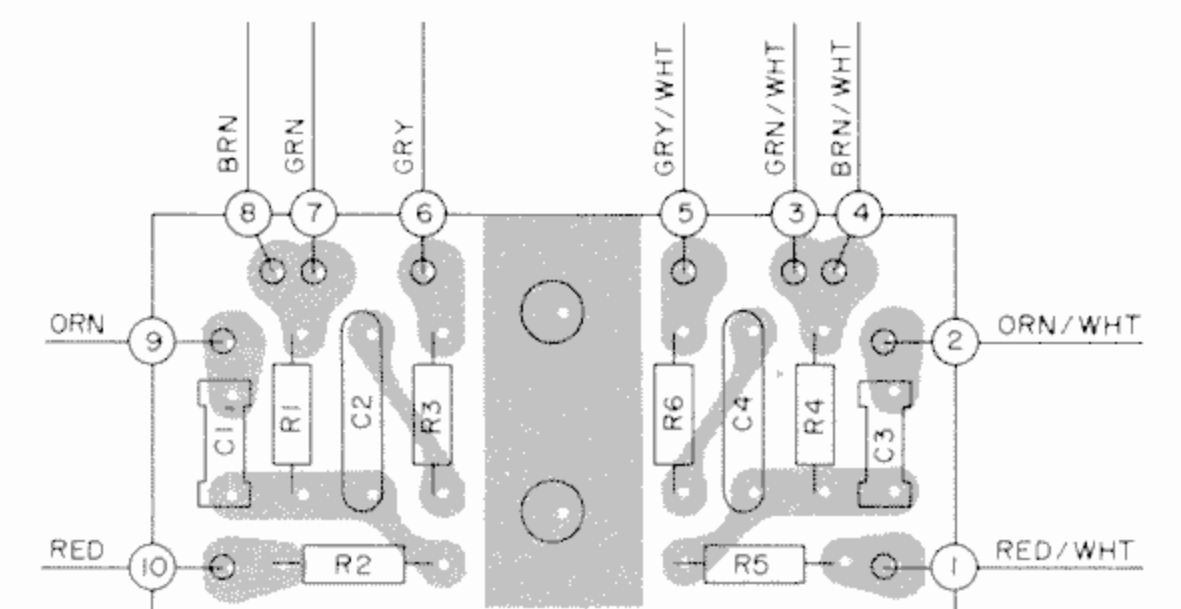
LEFT CHANNEL PREAMP PC BOARD 044-512



RIGHT CHANNEL PREAMP PC BOARD 044-512



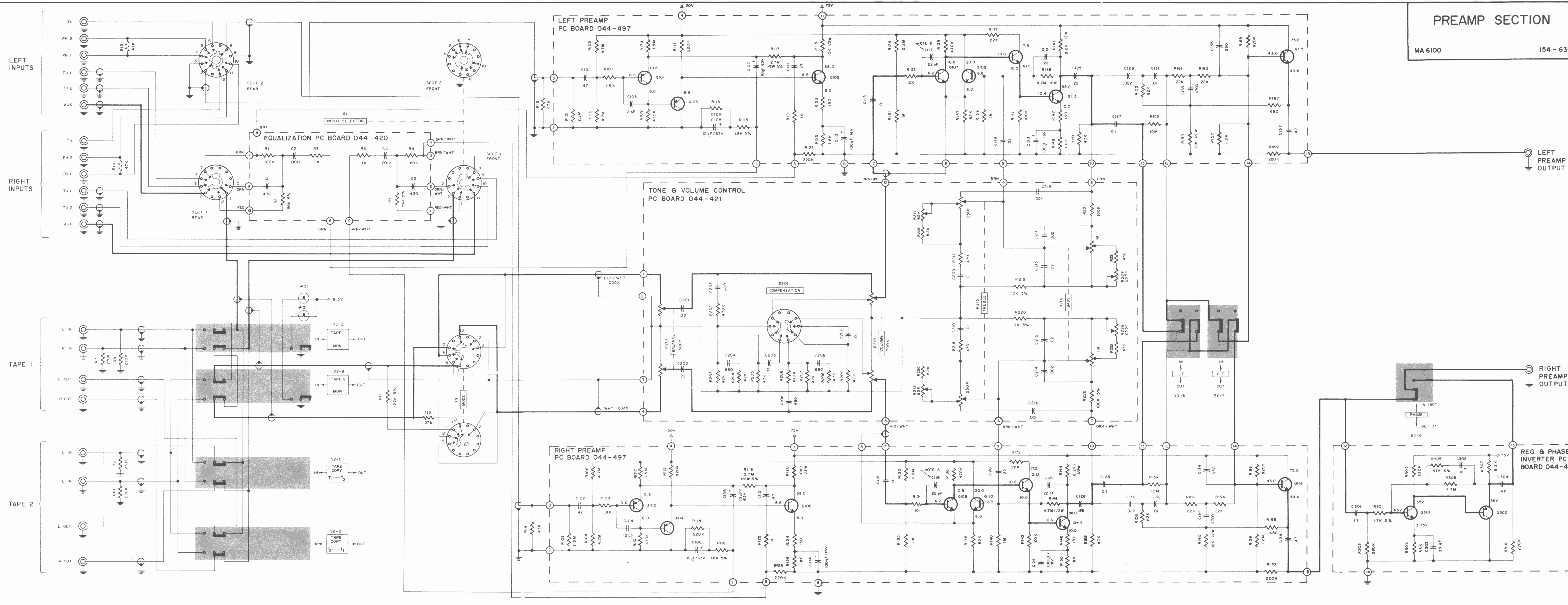
EQUALIZATION PC BOARD 044-420



PREAMP SECTION

MA 6100

154 - 632



LEFT PREAMP
PC BOARD 044-497

EQUALIZATION PC BOARD 044-420

TONE & VOLUME CONTROL
PC BOARD 044-421

RIGHT PREAMP
PC BOARD 044-497

REG. & PHASE
INVERTER PC
BOARD 044-419

LEFT
INPUTS

RIGHT
INPUTS

TAPE 1

TAPE 2

LEFT
PREAMP
OUTPUT

RIGHT
PREAMP
OUTPUT

SECT 2
REAR

SECT 2
FRONT

SECT 1
REAR

SECT 1
FRONT

S201
COMPENSATION

S2-E

S2-F

PHASE
IN 180°
OUT 0°
S2-G

